

Crisis on Campus: Turning Mental Illness into Wellness

**Thursday, November 1
UW-Madison Diversity Forum 2018**



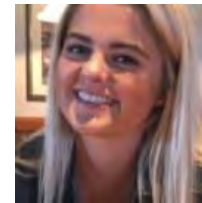
**Thank you for
choosing this breakout session!**

Today We're Going to Discuss...

- NAMI and NAMI Wisconsin
 - Jessica Gruneich, J.D., NAMI WI Executive Director
 - Chrisanna Manders, NAMI WI Associate Director



- NAMI UW-Madison
 - Kenia Link, Outreach Coordinator



- UW-Madison Police Department
 - Kristen Roman, Chief of University Police



- Insight from lived experience
 - Jessica Gruneich, J.D., NAMI WI Executive Director
 - Chrisanna Manders, NAMI WI Associate Director





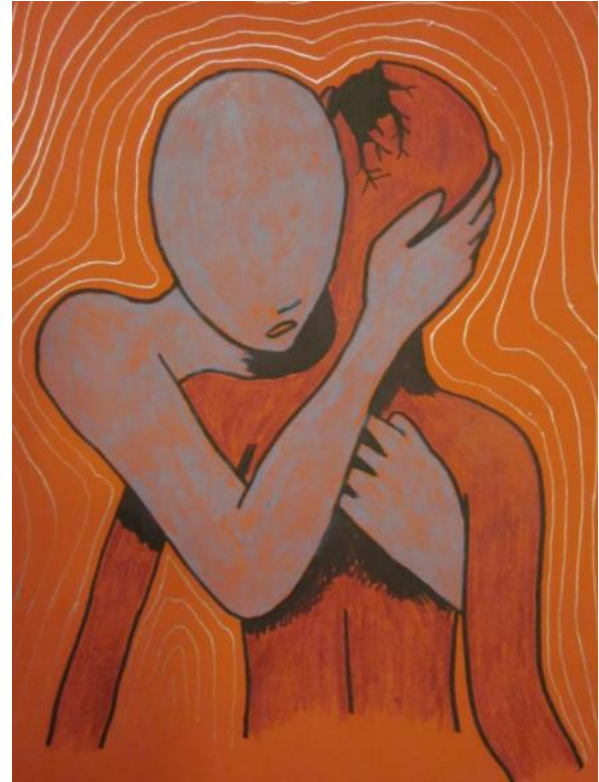
Mental Illness Overview

Mental Illness Overview

A mental illness can affect persons of any:

- Age
- Race
- Religion
- Gender
- Socioeconomic status, etc

Bottomline: Mental illness does NOT discriminate.



Mental Illness Overview

Just as diabetes is
a disorder of the pancreas...



Mental illnesses are disorders
associated with the brain.



Trivia Time!

1 in ____
Americans live with
a mental illness.



1 in 5
Americans live with
a mental illness.

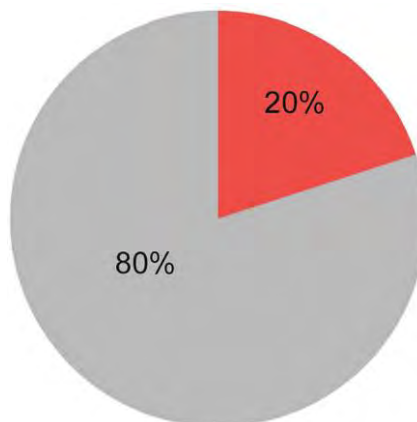
Challenge Round!

Mental illness treatments
have an average of a
_____%
success rate.

Mental health treatment
has an average of a
80%
success rate.

The Take-Home Message

(1.) Living with a mental illness is common



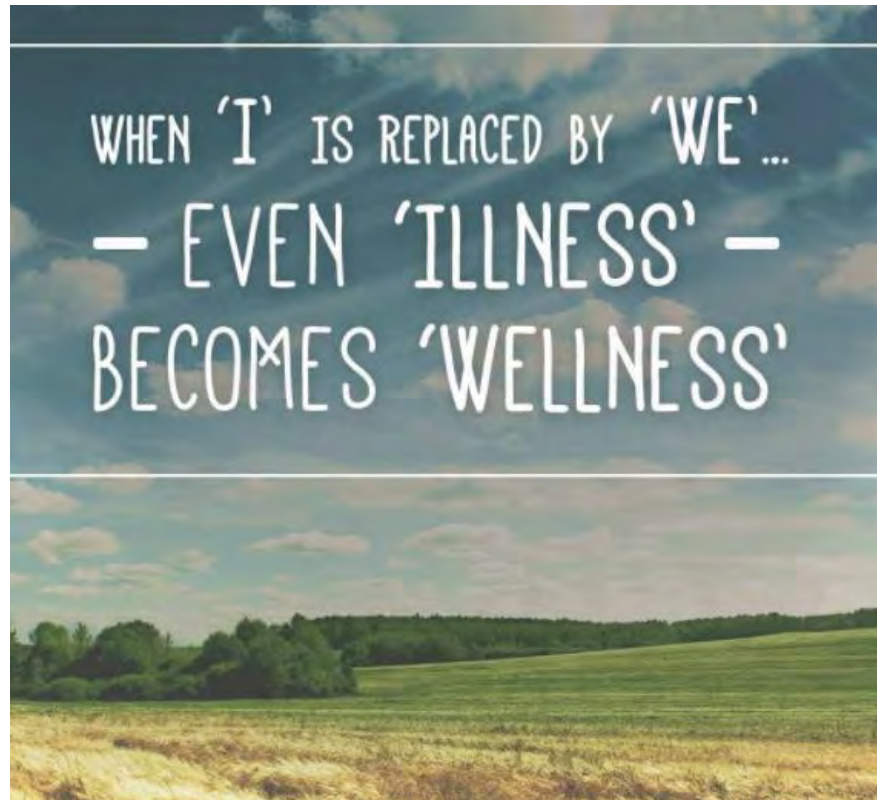
The Take-Home Message

(2.) Mental illnesses respond VERY well to treatment!



The Take-Home Message

Therefore: we have SO much to connect on,
and help one another through!



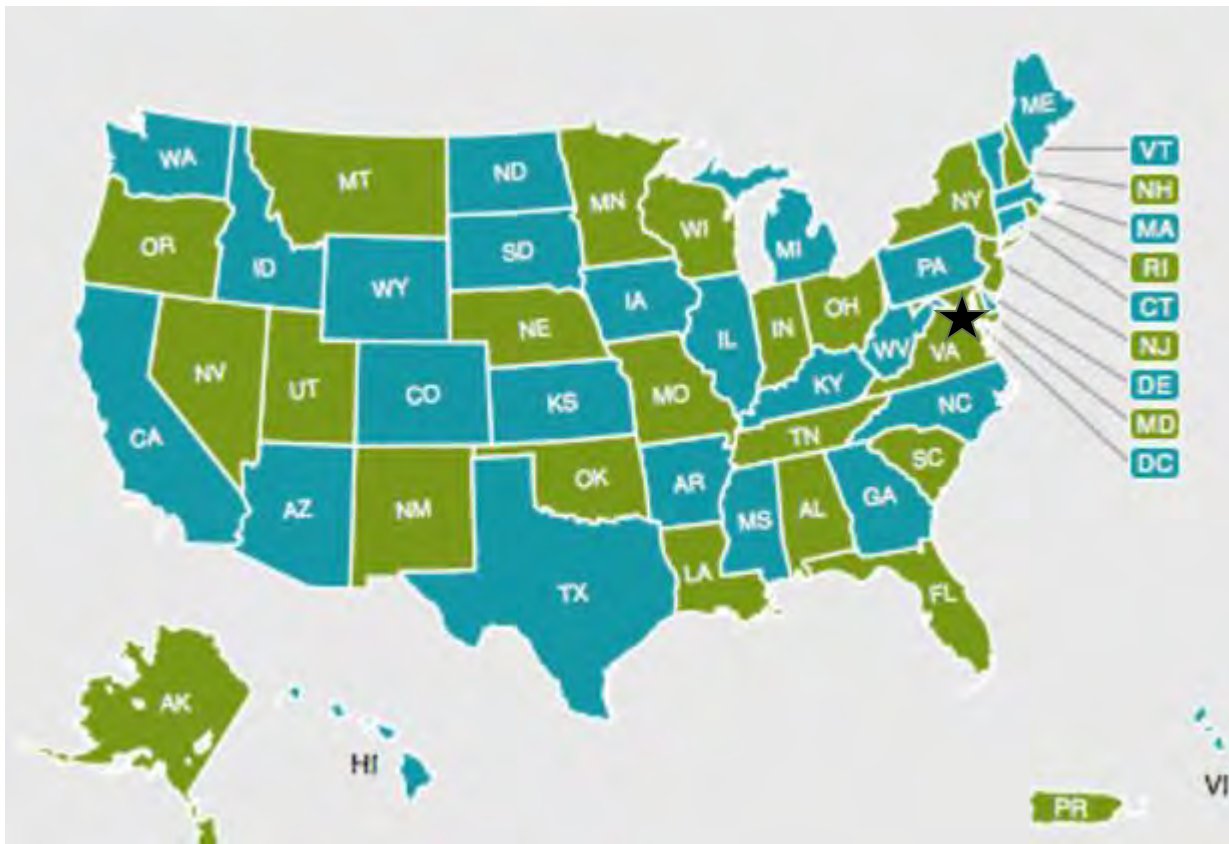
National Alliance on Mental Illness (NAMI)

NAMI

NAMI is the nation's largest grassroots mental health organization
dedicated to building better lives
for the millions of Americans affected by mental illness.



NAMI National



NAMI Structure

National Office (NAMI)

- Arlington, Virginia



State Office (NAMI Wisconsin)

- Madison, WI



Local Affiliates

- Ex. NAMI Dane County +
NAMI UW-Madison



NAMI Wisconsin

The mission of NAMI Wisconsin
is to improve the quality of life of people affected by mental illnesses
and to promote recovery.



Advocacy



Education



Support

CIT & CIP Trainings



- **CIT = Crisis Intervention Team**
 - 40 hours (5, 8-hour days)
 - Law enforcement



- **CIP = Crisis Intervention Partner**
 - 16 hours (2, 8-hour days)
 - Partners of law enforcement

NAMI UW–Madison

UW–Madison Police

Insight from Lived Experience by NAMI Wisconsin

Chrisanna Manders

Before I share my story...

Be patient and tough; someday
this pain will be useful
to you.

- Ovid

About Me

- Originally from DeSoto, Texas



- Grew up on a horse ranch



About Me



My Thoughts for You



Crisis Resources

- Call 911 and **request a CIT officer** to report to a location, if available
- **National Suicide Prevention Lifeline:**
 - 1-800-273-8255 (TALK)



Jessica Gruneich, JD

**Thank you for
your presence here today!**



And remember....

We can heal the world...



while we heal ourselves.

QUESTIONS?

Contact Info:

nami@namiwisconsin.org
(608) 268-6000

