

REALITY VS. PERCEPTION: THE CHANGING DEMOGRAPHICS OF AMERICA AND THE RESPONSE TO IT

Panelists:

Karen Menendez Collier, Director, Centro Hispano of Dane County

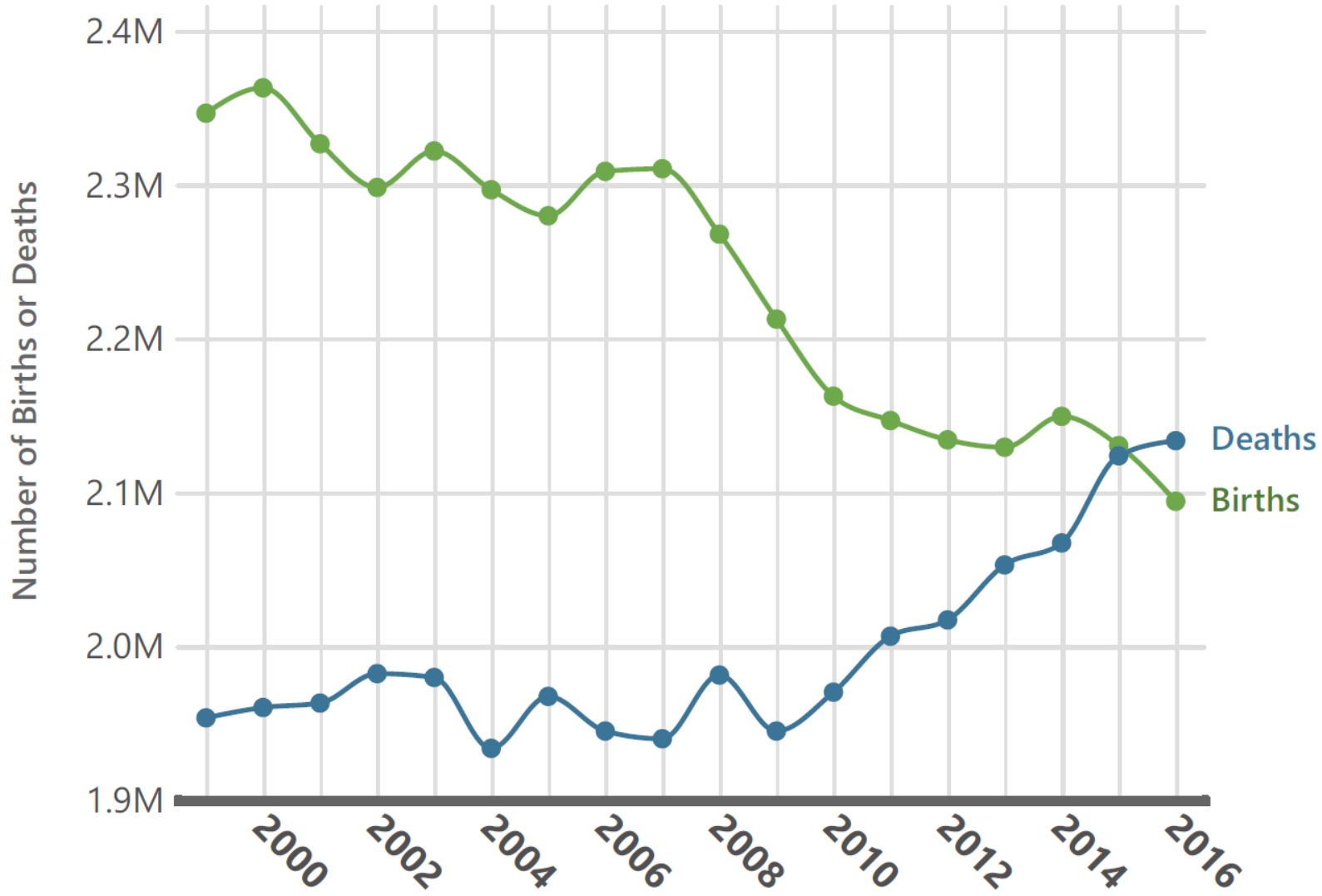
Kathleen Culver, Director, Center for Journalism Ethics

Gail Groy, Partner, Axley law firm

Sarah Kemp, Researcher, Applied Population Laboratory

Benjamin Marquez, Professor, Department of Political Science

Non-Hispanic White Deaths Surpass Births in the U.S.

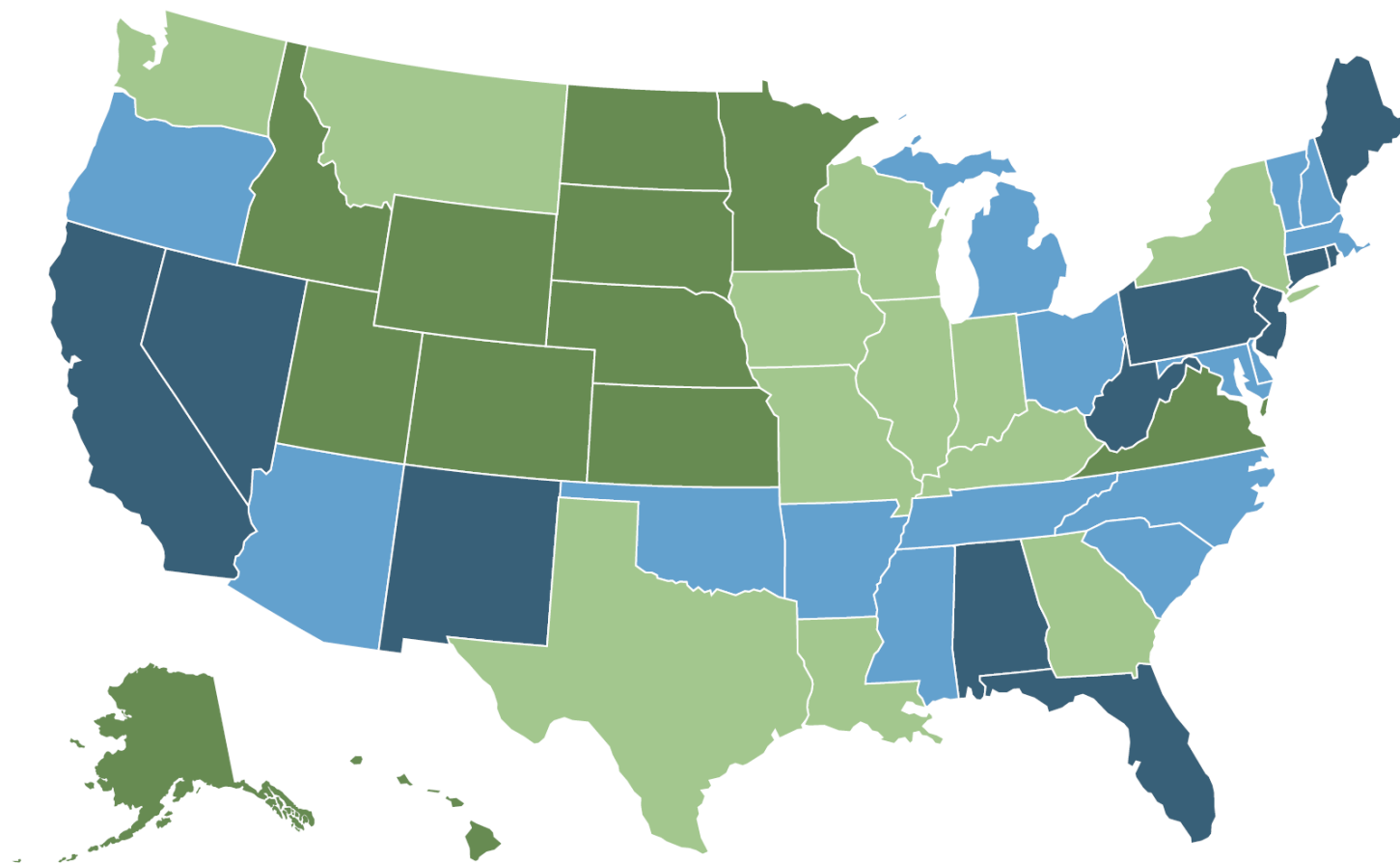


Source: National Center for Health Statistics, Centers for Disease Control

White Deaths Exceed Births in a Majority of U.S. States by Rogelio Sáenz and APL affiliate Kenneth Johnson

Non-Hispanic White Deaths Exceed Births

States in blue had more whites dying than being born in 2016

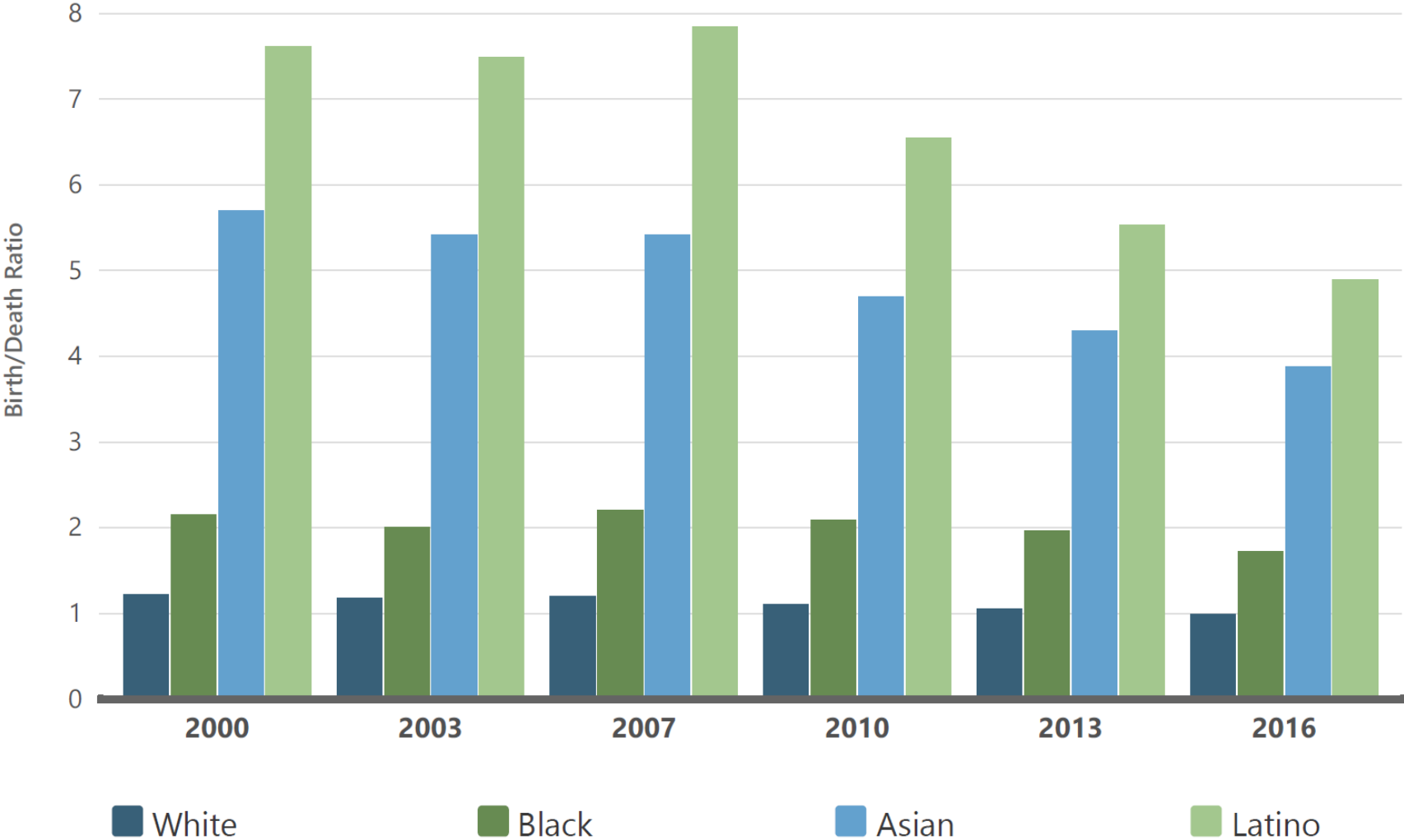


■ Early Natural Decrease ■ Recent Natural Decrease ■ Low Natural Increase ■ High Natural Increase

Source: National Center for Health Statistics, Centers for Disease Control

White Deaths Exceed Births in a Majority of U.S. States by Rogelio Sáenz and APL affiliate Kenneth Johnson

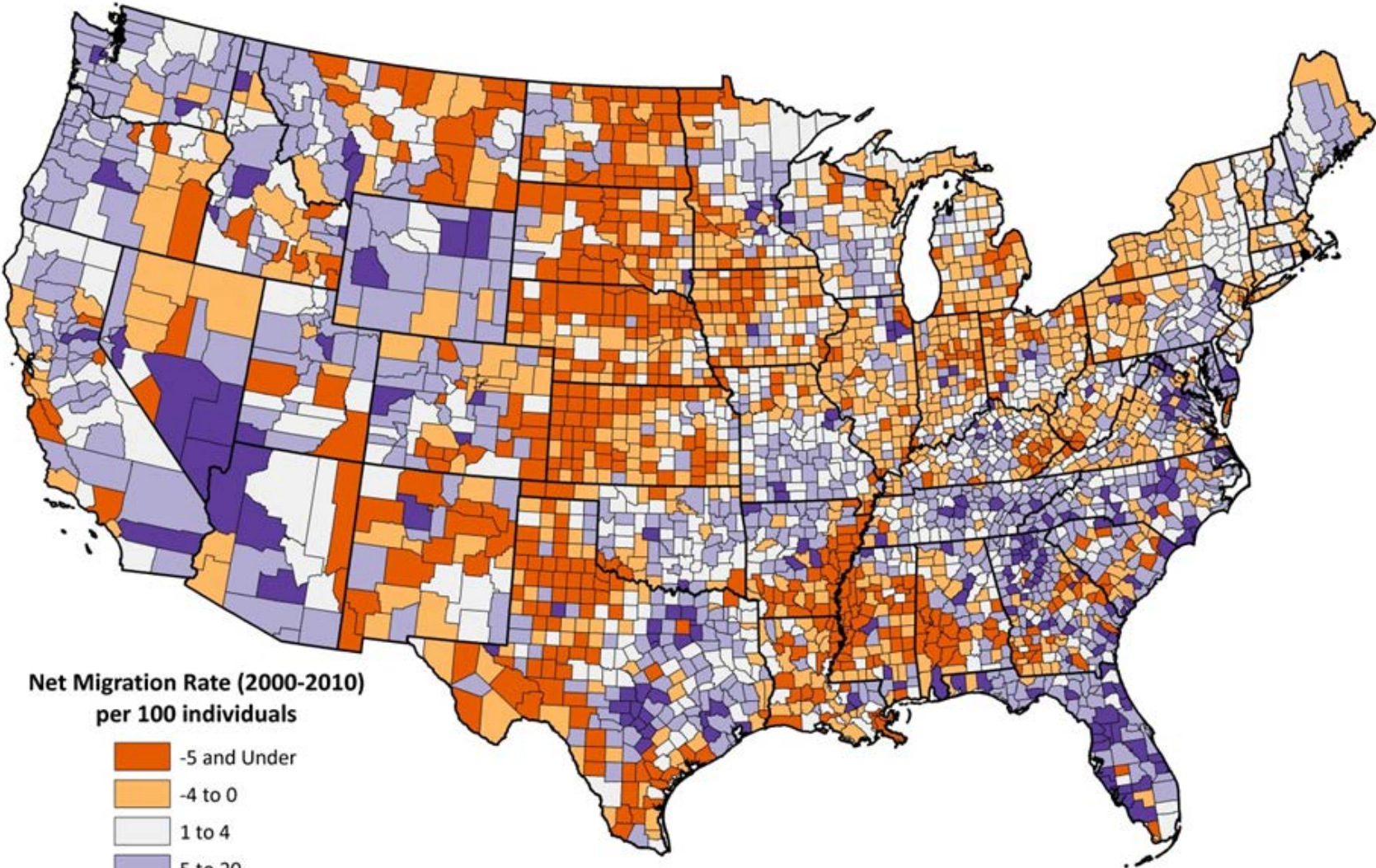
Birth to Death Ratio by Race and Ethnic Origin, 2000 to 2016



Source: NCHS-CDC

White Deaths Exceed Births in a Majority of U.S. States by Rogelio Sáenz and APL affiliate Kenneth Johnson

Net Migration in the United States




Net Migration Rate (2000-2010)
per 100 individuals

- 5 and Under
- 4 to 0
- 1 to 4
- 5 to 20
- Over 20

How is the Question of Race and Ethnicity Asked

Page 1

This leaflet shows the content of the questionnaires being used in the 1970 Census of Population and Housing. See explanatory notes on the page 1 flap.



UNITED STATES CENSUS

This is your Official Census Form

Please fill it out and mail it back on Census Day, Wednesday, April 1, 1970

a1. a2. a3. a4. a5.

If the address shown above has the wrong apartment identification, please write the correct apartment number or location here:

How To Fill This Form

- Use a black pencil to answer the questions.**

This form is read by an electronic computer. Black pencil is better to use than ballpoint or other pens.

Fill circles "O" like this: ●

The electronic computer reads every circle you fill. If you fill the wrong circle, erase the mark completely, then fill the right circle.

When you write an answer, print and write clearly.
- See the filled-in example on the yellow instruction sheet.**

This example shows how to fill circles and write in answers. If you are not sure of an answer, give the best answer you can.

If you have a problem, look in the instruction sheet.

All instructions are numbered the same as the questions on the Census form.

If you need more help, call the Census office.

You can get the number of the local office from telephone "Information" or "Directory assistance."
- Your answers are CONFIDENTIAL. The law (Title 13, United States Code) requires that you answer the questions to the best of your knowledge.**

Your answers will be used only for statistical purposes and cannot, by law, be disclosed to any person outside the Census Bureau for any reason whatsoever.

The householder should make sure that the information is shown for everyone here.

If a boarder or roomer or anyone else prefers not to give the householder all his information to enter on the form, the householder should give at least his name, relationship, and sex in questions 1 to 3, then mail back the form. A Census Taker will call to get the rest of the information directly from the person.
- Check your answers. Then, mail back this form on Wednesday, April 1, or as soon afterward as you can. Use the enclosed envelope; no stamp is needed.**

Your cooperation in carefully filling out the form and mailing it back will help make the census successful. It will save the government the expense of calling on you for the information.

PLEASE CONTINUE

U.S. Department of Commerce
Bureau of the Census
Form D-60

United States Census 2000

U.S. Department of Commerce
Bureau of the Census

This is the official form for all the people at this address. It is quick and easy, and your answers are protected by law. Complete the Census and help your community get what it needs — today and in the future!

Start Here

Please use a black or blue pen.

- How many people were living or staying in this house, apartment, or mobile home on April 1, 2000?**

Number of people

INCLUDE in this number:

 - foster children, roomers, or housemates
 - people staying here on April 1, 2000 who have no other permanent place to stay
 - people living here most of the time while working, even if they have another place to live

DO NOT INCLUDE in this number:

 - college students living away while attending college
 - people in a correctional facility, nursing home, or mental hospital on April 1, 2000
 - Armed Forces personnel living somewhere else
 - people who live or stay at another place most of the time
- Please turn the page and print the names of all the people living or staying here on April 1, 2000.**

If you need help completing this form, call 1-800-XXX-XXXX between 8:00 a.m. and 8:00 p.m., 7 days a week. The telephone call is free.

TDD — Telephone display device for the hearing impaired. Call 1-800-XXX-XXXX between 8:00 a.m. and 9:00 p.m., 7 days a week. The telephone call is free.

¿NECESITA AYUDA? Si usted necesita ayuda para completar este cuestionario llame al 1-800-XXX-XXXX entre las 8:00 a.m. y las 9:00 p.m., 7 días a la semana. La llamada telefónica es gratis.

The Census Bureau estimates that, for the average household, this form will take about 38 minutes to complete, including the time for reviewing the instructions and answers. Comments about the estimate should be directed to the Associate Director for Finance and Administration, Attn: Paperwork Reduction Project 0627-0856, Room 3104, Federal Building 3, Bureau of the Census, Washington, DC 20523.

Respondents are not required to respond to any information collection unless it displays a valid approval number from the Office of Management and Budget.

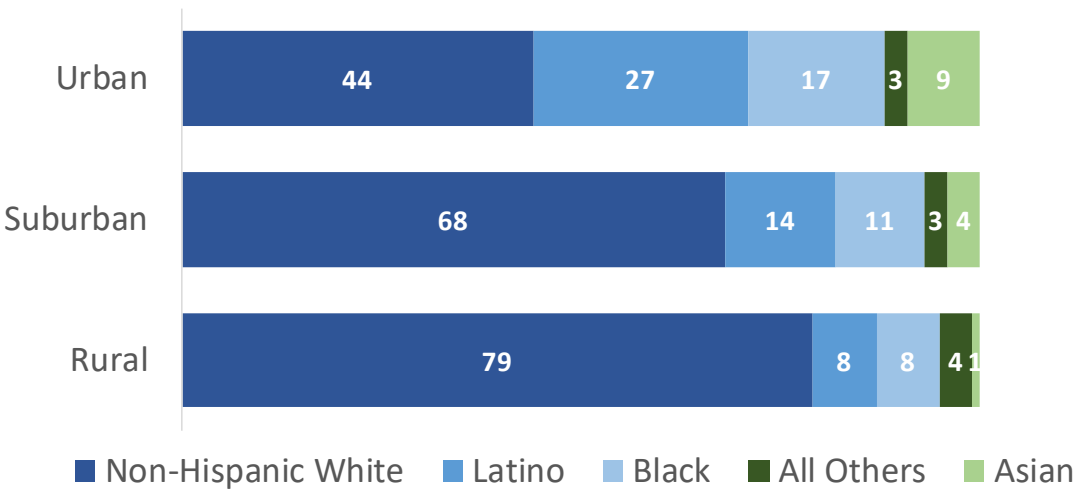
Form D-61B

GSA GEN. REG. NO. 2706-108-0000-9000

<http://www.pewsocialtrends.org/interactives/multiracial-timeline/>

Where You Live in the United States

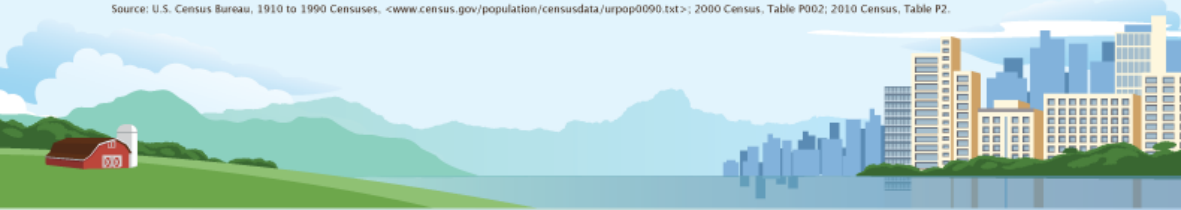
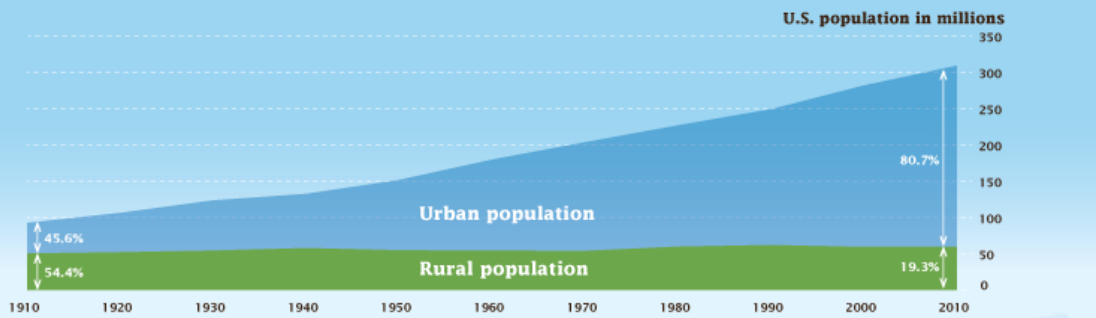
Percent of population



Source: 2012-16 American Community Survey

Our Changing Landscape

Change in Rural and Urban Population Size: 1910-2010



RURAL

URBAN

Racial and Ethnic Composition of Children Under Age 18

